

Dr. Elizabeth McGoey

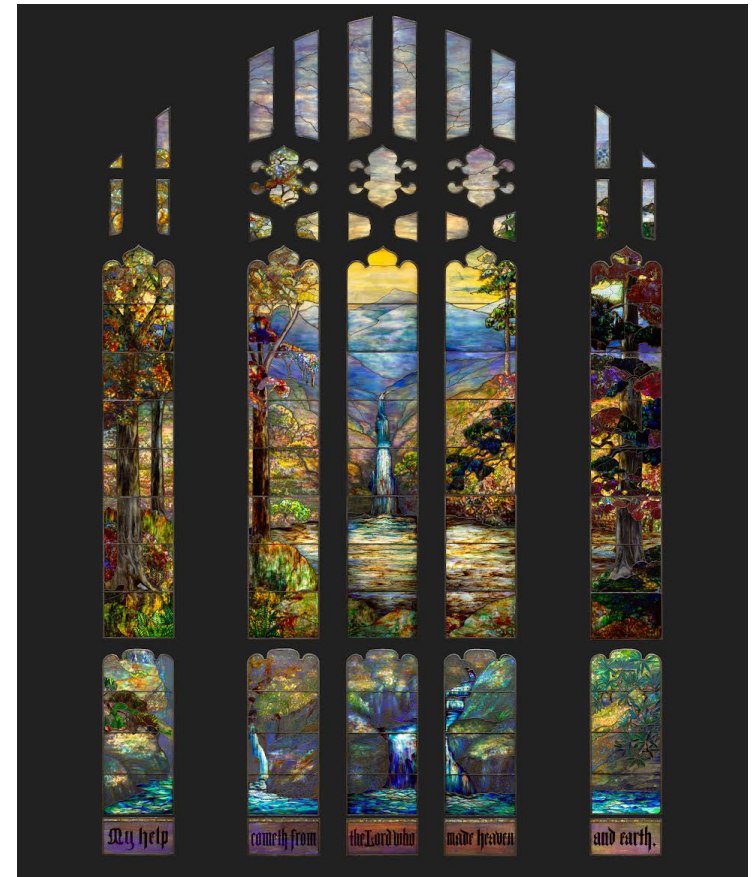
A New Setting for Tiffany Glass: The Hartwell Memorial Window at the Art Institute of Chicago

Cover Image: Hartwell Memorial Window, 1917; design attributed to Agnes F. Northrop (American, 1857–1953); Tiffany Studios (American, 1902–1932); leaded glass; The Art Institute of Chicago
Find the full list of generous supporters of the Tiffany window at artic.edu.

DATE | **October 13, 2022**

TIME | 10:00 A.M. Lecture

NOTES



FINE ARTS SOCIETY OF PEORIA PRESENTS:

OCT
13
2022

Dr. Elizabeth McGoey
the Ann S. and Samuel M. Mencoﬀ Associate Curator of
Arts of the Americas at the Art Institute of Chicago

*A New Setting for Tiffany Glass: The Hartwell
Memorial Window at the Art Institute of Chicago*

Compiled by:



Peoria
Public
Library

107 NE Monroe Peoria IL 61602
309.497.2000 • www.peoriapubliclibrary.org

A selected bibliography of materials available through Peoria Public Library, plus additional Internet resources

You will also find information offered by Peoria Public Library
Call 309-497-2000 for passwords and assistance

BOOKS

709. 2 Duncan, Alastair, Martin P. Eidelberg, and Neil Harris. *Masterworks*
DUN *of Louis Comfort Tiffany*. New York: Harry N. Abrams, 1989.
- 709.2 McKean, Hugh. *The "Lost" Treasures of Louis Comfort Tiffany*. New
MCK York: Doubleday, 1980.
- 709.73 Bing, Siegfried, and Robert Koch. *Artistic America, Tiffany Glass,*
BIN *and Art Nouveau*. Cambridge, Massachusetts: MIT
Press, 1970.
- 726.5 Pongracz, Patricia. *Louis C. Tiffany and the Art of Devotion*. New
PON York: Museum of Biblical Art; London, 2012.
- 748.59 Duncan, Alastair. *Tiffany Windows: The Indispensable Book on*
DUN *Louis C. Tiffany's Masterpieces*. New York: Simon
and Schuster, 1980.

ONLINE

Visit The Fine Arts Society of Peoria www.fineartsociety.net

Background information on Dr. Elizabeth McGoey and her writings on artworks in the Art Institute of Chicago collection. <https://tinyurl.com/2p9fpjxp>

Dr. Elizabeth McGoey, "Tiffany to Shine at the Art Institute". New Acquisition. February 2021. <https://tinyurl.com/mt3ba7nd>

Art institute of Chicago Artwork Spotlight: The Hartwell Memorial Window, 2021. <https://tinyurl.com/22tns76k>

Alice Cooney Frelinghuysen, Curator of American Decorative Arts at the Metropolitan Museum of Art, "Glass Gardens: Agnes Northrop Designs for Louis C Tiffany." Clarice Distinguished Lecture at the Smithsonian American Art Museum, 2016. <https://tinyurl.com/57bvpawu>

Spindler, Ellen M. "Celebrating Agnes Northrop, Flushing's Tiffany Designer, Her Stained-Glass Windows at the Bowne Street Community Church in Flushing, Queens, and the Tiffany Girls" from Bowne House website. <https://www.bownehouse.org/agnesnorthrop>

DATABASE ACCESS

Access electronic versions of full-text journal articles at:
www.peoriapubliclibrary.org.

Click on **RESEARCH** and then **ALL DATABASES**.

Search in Research Databases (EBSCOhost Research Databases)

EXAMPLES OF FULL-TEXT JOURNAL ARTICLES

Connors, Thomas. "Tiffany Church Windows at the Driehaus Museum." *Magazine Antiques*, vol. 186, no. 5, Sept. 2019, pp. 36–38. *EBSCOhost*.

De Rosa, Elizabeth. "Louis C. Tiffany's Landscapes of Devotion." *Magazine Antiques*, vol. 179, no. 6, Nov. 2012, pp. 120–27. *EBSCOhost*.

Eidelberg, Martin. "Clara Driscoll and the Tiffany Girls." *American Craft*, vol. 67, no. 1, Feb. 2007, pp. 87–89. *EBSCOhost*.

The Fine Arts Society of Peoria was founded in 1962 to provide a guided series of lectures devoted to the exploration of the arts. Over the past 60 seasons, the Society has made a substantial contribution to the cultural life of Central Illinois.

Lectures are presented at the Peoria Riverfront Museum, 222 SW Washington Street, in downtown Peoria. Free parking in the museum's covered parking deck is accessible from Water Street. Programs begin with social time at 9:30 a.m.; the one-hour lecture begins at 10:00 a.m. Tickets for nonmembers are available at the door. Lectures are also available free to members via Zoom and as recordings through the website: www.fineartsociety.net.